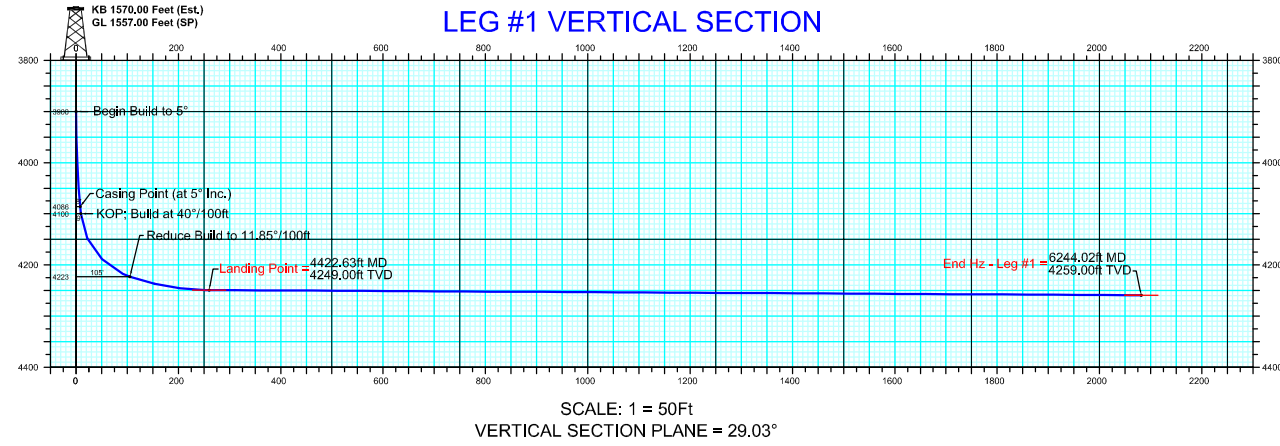


Client Name Here	
Job Name Here	
Location Here	
29184	

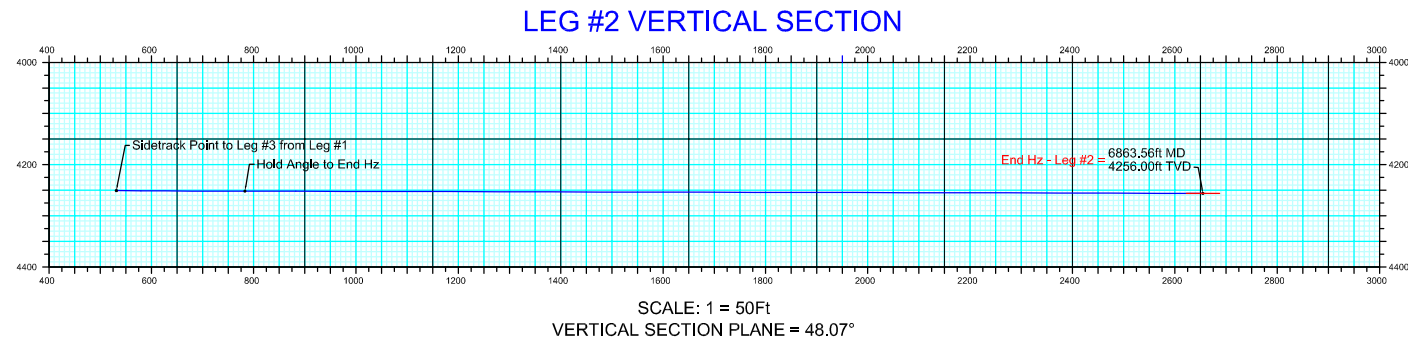
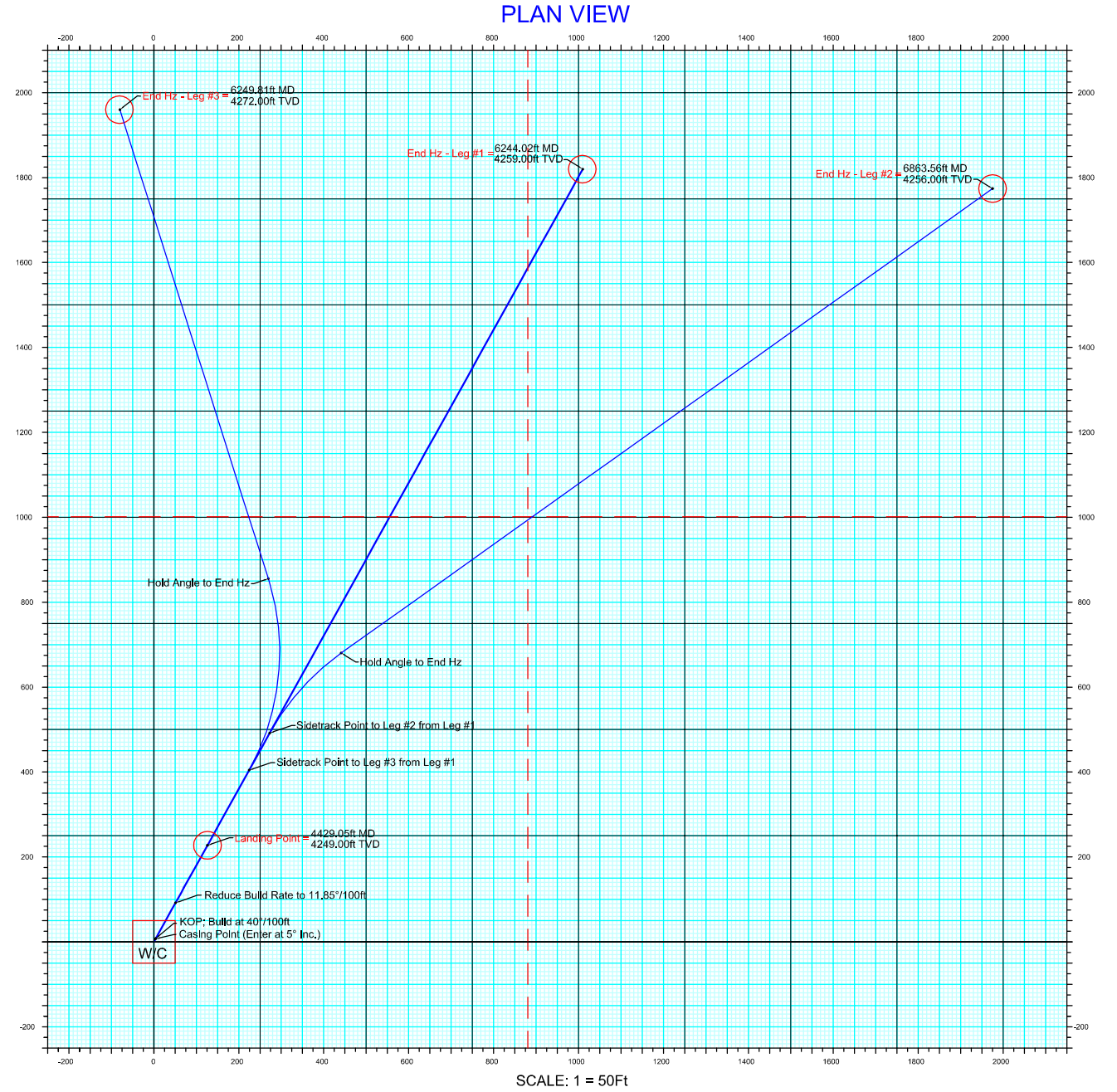
DATE DRAWN:
 SURVEY PLAT DATE:
 GEOLOGICAL PROG DATE:
 WELL PROFILE REFERENCED TO TRUE NORTH

Magnetic Declination
 7.23° East
 Dip Angle
 74.01°
 Magnetic Field Strength
 57339.80 nT



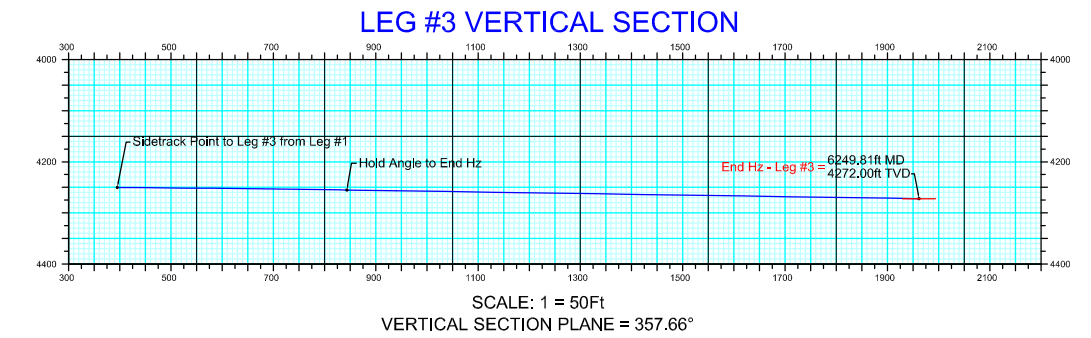
CRITICAL POINTS FOR Leg #1 Proposal

<#>	MD	Inc	Azm	TVD	SS-TVD	N-S	E-W	VS	Comment
1	3900.00	0.00	29.03	3900.00	-2330.00	0.00	0.00	0.00	Begin Build to 5"
2	4086.00	5.00	29.03	4085.76	-2515.76	7.09	3.94	8.11	Casing Point (at 5" Inc.)
3	4100.00	5.00	29.03	4099.71	-2529.71	8.16	4.53	9.33	KOP: Build at 40°/100ft
4	4265.00	71.00	29.03	4222.66	-2652.66	92.15	51.14	105.39	Reduce Build to 11.85°/100ft
5	4422.63	89.68	29.03	4249.00	-2679.00	227.43	126.22	260.10	Landing Point: Hold 89.68° Inc. to End Hz
6	6244.02	89.69	29.03	4259.00	-2689.00	1820.00	1010.00	2081.47	End Hz - Leg #1



CRITICAL POINTS FOR Leg #2

<#>	MD	Inc	Azm	TVD	SS-TVD	N-S	E-W	VS	Comment
1	4725.00	89.68	29.03	4250.70	-2680.70	491.80	272.94	531.69	Sidetrack Point to Leg #2 from Leg #1; Build at 10° DLS
2	4979.78	89.87	54.51	4251.72	-2681.72	680.26	441.26	782.85	Hold Angle to End Hz
3	6863.56	89.87	54.51	4256.00	-2686.00	1774.00	1975.00	2654.75	End Hz - Leg #2



CRITICAL POINTS FOR Leg #3

<#>	MD	Inc	Azm	TVD	SS-TVD	N-S	E-W	VS	Comment
1	4625.00	89.68	29.03	4250.14	-2680.14	404.37	224.42	394.87	Sidetrack Point to Leg #3 from Leg #1; Build at 10° DLS
2	5090.94	89.17	342.44	4255.12	-2685.12	855.28	269.69	843.56	Hold Angle to End Hz
3	6249.81	89.17	342.44	4272.00	-2702.00	1960.00	-80.00	1961.63	End Hz - Leg #3